

RYAN'S RIDGE SUBDIVISION

A PART OF THE SW 1/4 OF THE SE 1/4
OF SECTION 8, T24N-R5E, PLAINFIELD TWP.
IOSCO COUNTY, MICHIGAN

SURVEYOR'S CERTIFICATE

I, Glenn F. DeLaMater, surveyor, certify:

That I have surveyed, divided and mapped the land shown on this plat, described as follows: RYAN'S RIDGE SUBDIVISION A part of the SW 1/4 of the SE 1/4 of Section 8, T24N, R5E, Plainfield Twp., Iosco County, Michigan, beginning at the South 1/4 corner Section 8, Town 24 North, Range 5 East, 898.03 feet along the North-South 1/4 line to the Southerly line of Chain Lakes Road; thence South 65°11'47" East 50.96 feet along the Southerly line of Chain Lakes Road; thence South 64°01'47" East 699.13 feet along the Southerly line of Chain Lakes Road to a Point of curve of a curve having a delta angle of 25°56'00", a radius of 749.20 feet, a tangent of 172.51 feet and a chord bearing and distance of South 76°59'47" East 335.95 feet; thence South 64°07'25" West 24.62 feet; thence South 3°31'25" West 530.10 feet to the South Section line; thence North 87°20'35" West 993.84 feet along the South Section line to the Point-of-Beginning. This plat contains 12 lots numbered consecutively 1 thru 12 inclusive.

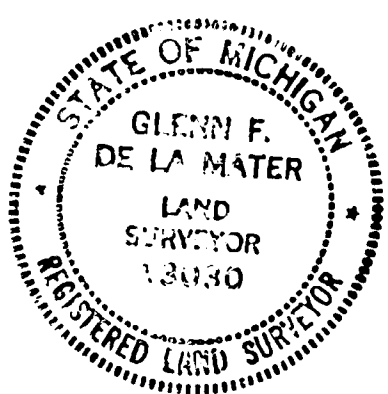
That I have made such survey, land-division and plat by the direction of the owners of such land.

That such plat is a correct representation of all the exterior boundaries of the land surveyed and the subdivision of it.

That the required monuments and lot markers have been located in the ground or that surety has been deposited with the municipality, as required by section 125 of the act.

That the accuracy of survey is within the limits required by section 126(3) of the act as explained in the legend.

July 9, 1971
Date



EDMANDS ENGINEERING, INC.
1501 West Thomas Street
P. O. Box 580
Bay City, Michigan 48706

Glenn F. DeLaMater R.L.S. #13037
Vice-President

PROPRIETOR'S CERTIFICATE

We as proprietors certify that we caused the land embraced in this plat to be surveyed, divided, mapped and dedicated as represented on this plat and that the road is for the use of the public. That the public utility easements are private easements and that all other easements are for the uses shown on the plat.

Harold L. Bannister
Harold L. Bannister

Frank Leiva
FRANK LEIVA

Ira T. Scofield (L.S.)
Ira T. Scofield
Hale, Michigan 48739

Ether M. Scofield (L.S.)
Ether M. Scofield
Hale, Michigan 48739

ACKNOWLEDGEMENT

State of Michigan)
Iosco County) S.S.

Personally came before me this 17 day of July, 1971, the above named Ira T. Scofield and Ether M. Scofield, his wife, to me known to be the persons who executed the foregoing instruments and acknowledged that they executed the same as their free act and deed.

Notary Public Harold L. Bannister
Iosco County, Michigan

My commission Expires: 9-27-71

COUNTY TREASURER'S CERTIFICATE

The records in my office show no unpaid taxes or special assessments for the five years preceding July 19, 1971, involving the lands included in this plat.

Edward J. Neikie
Edward J. Neikie, Treasurer
Iosco County

COUNTY DRAIN COMMISSIONER'S CERTIFICATE

Approved on July 22, 1971 as complying with Section 192 of Act 288, P.A. 1967 and the applicable rule and regulations published by my office in the County of Iosco.

John A. Mielock
John A. Mielock, Drain Commissioner

CERTIFICATE OF COUNTY ROAD COMMISSIONERS

Approved on July 28, 1971 as complying with Section 183 of Act 288, P. A. 1967 and the applicable published rules and regulations of the Board of Road Commissioners of Iosco County.

Henry M. Conley
Henry M. Conley, Chairman

A.J. Aulerick
A.J. Aulerick, MEMBER

M.F. Killey
M.F. KILLEY VICE-CHAIRMAN

CERTIFICATE OF MUNICIPAL APPROVAL

I certify that this plat was approved by the Township Board, of the Township of Plainfield, at a meeting held August 10, 1971 and was reviewed and found to be in compliance with Act 288, P. A. 1967. This plat was approved by the District No. 2 Health Department on December 22, 1970.

Frances I. Boss (Hansen)
Frances I. Boss, Clerk (HANSEN)

COUNTY PLAT BOARD CERTIFICATE

This plat has been reviewed and is approved by the Iosco County Plat Board on August 27, 1971 as being in compliance with all of the provisions of Act 288, P. A. 1967, and the plat board's applicable rules and regulations.

Albert H. Buch
Albert H. Buch, Chairman

Edward J. Neikie
Edward J. Neikie, Treasurer

D. Keith Papez
D. Keith Papez, Clerk

RECORDING CERTIFICATE

State of Michigan)
Iosco County)

This plat was received for record on the 28 day of Sept. 1971 at 1:28 P.M. and recorded in Liber 14 of plate on Page 3-4.

Certified true copy of recorded plat.

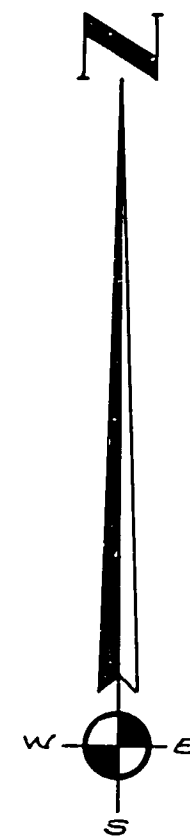
Allison Green
ALLISON GREEN
STATE TREASURER
Richard E. Lomax
Richard E. Lomax, Plat Examiner
Oct. 14, 1971

Albert H. Buch, Register of Deeds

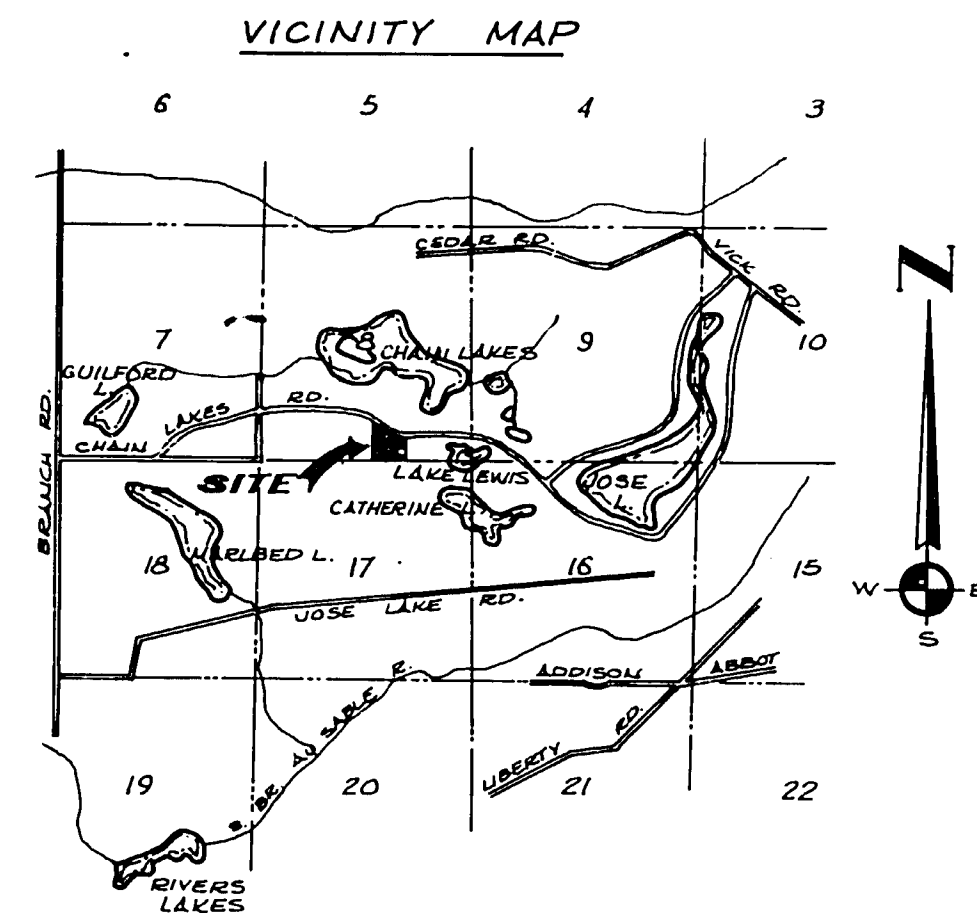
RYAN'S RIDGE SUBDIVISION

A PART OF THE SW 1/4 OF THE SE 1/4
OF SECTION 8, T24N-R5E, PLAINFIELD TWP.,
IOSCO COUNTY, MICHIGAN

0 50 100 200 300
SCALE 1"=100'

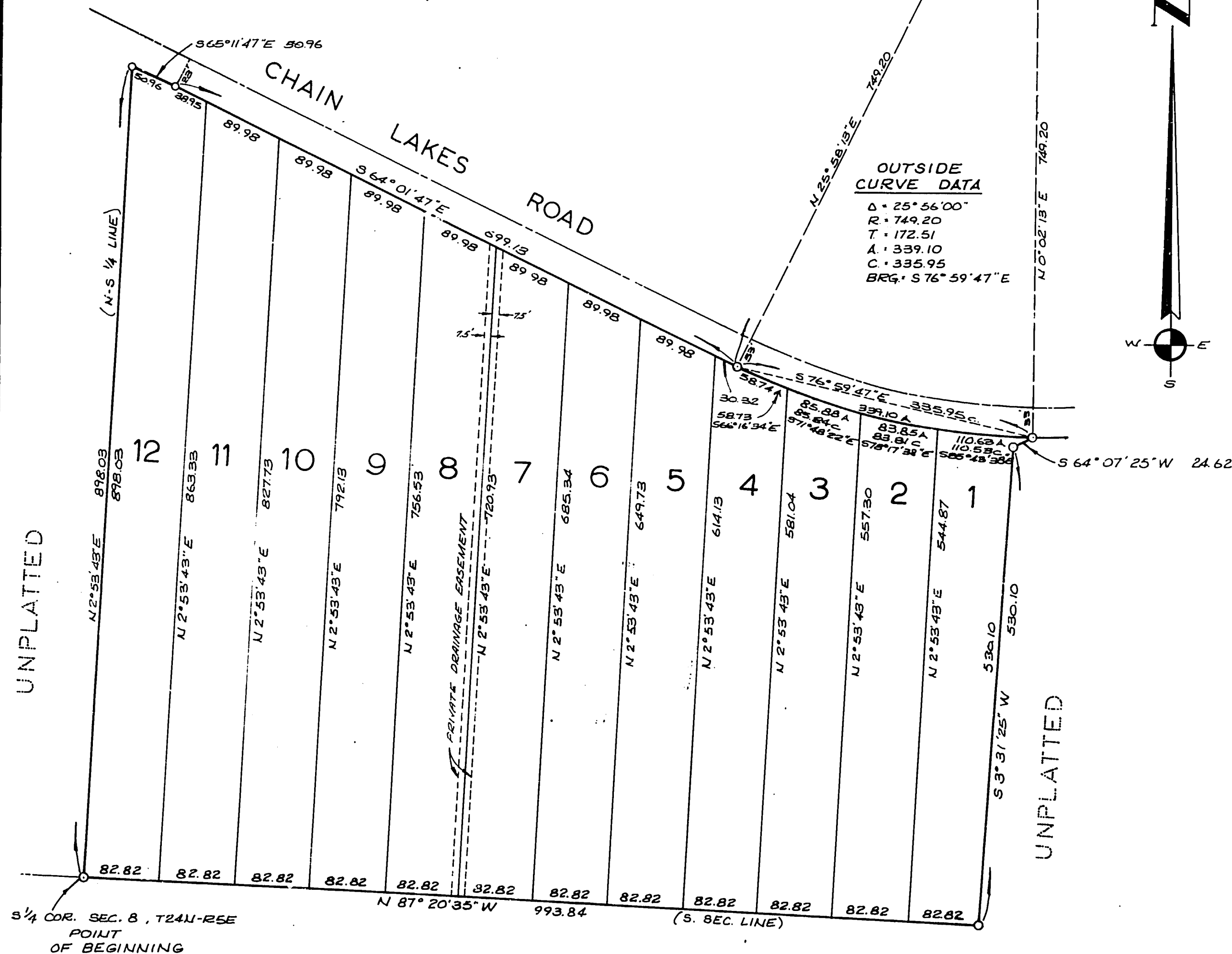


OUTSIDE
CURVE DATA
D = 25° 56' 00"
R = 749.20
T = 172.51
A = 339.10
C = 335.95
BRG = S 76° 59' 47" E



LEGEND

1. ALL DIMENSIONS ARE GIVEN IN FEET.
2. LOT CORNERS ARE MARKED WITH 1/2" ϕ IRON RODS 18" IN LENGTH.
3. CONCRETE MONUMENTS ARE SET AT POINTS MARKED THUS, "O".
4. ALL CURVILINEAR DISTANCES ARE IN ARC AND CHORD LENGTHS.
5. THE BEARINGS WERE ESTABLISHED FROM THE IOSCO COUNTY ROAD RE-SURVEY.



UNPLATTED

52429

EDMANDS ENGINEERING INC.

SHEET 1 OF 2